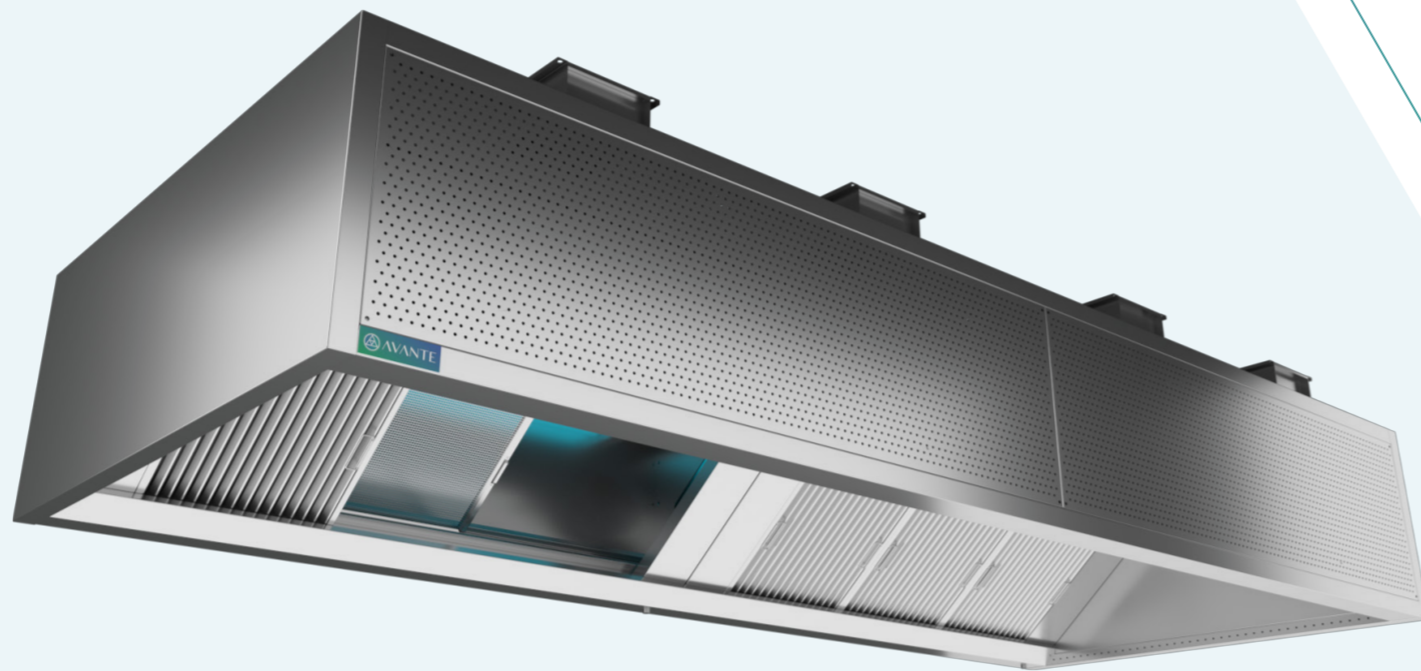


HOODS

AVANTE-SEF-UV

HIGH EFFICIENCY UV EXTRACT CANOPY WITH MAKEUP AIR AND INDUCTION NOZZLES



Avante-SEF-UV canopy is an extract canopy with makeup air plenum and UV technology, equipped with front and side induction nozzles to contain and extract fumes and heat within the hood area, thereby improving the extract efficiency and working conditions.

The makeup air to the hood is from the front perforated plenum and treated makeup air is introduced at low velocity to the cooking space to improve the comfort in the cooking area.

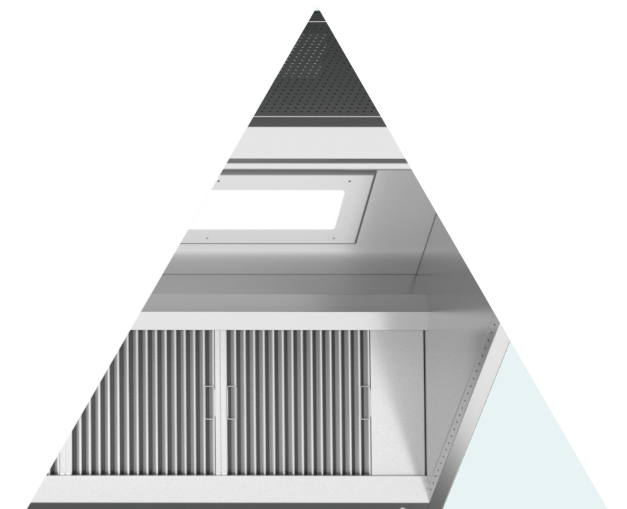
The makeup air is integrated into the hood structure, and the plenum is insulated.

APPLICATION

- Avante-SEF-UV is designed with high-efficiency filtration capabilities combined with Ultraviolet technology for neutralizing the grease and mitigating the odors released by the cooking appliances.
- Avante-SEF-UV is well-suited to all types of commercial and professional kitchens
- Equipped with a space-saving integrated makeup air system, featuring a double skin design that simplifies the balancing of kitchen air flows and eliminates the need for extra makeup terminals, leading to a project cost reduction

CUSTOMIZATION

- Wall mounted
- Island mounted
- 600mm height, 1350mm depth (min), length varies according to layout requirements



MAINTENANCE

- Dripping grease is arrested with vane and collected in an easily accessible grease tray

OPTIONS

- LED dimmable spotlights
- Service Distribution Unit
- Factory-installed hood Fire Suppression System
- Factory-installed hood Demand Control Ventilation System
- Hood cladding / powder coating

HOODS

AVANTE-SEF-UV HIGH EFFICIENCY UV EXTRACT CANOPY WITH MAKEUP AIR AND INDUCTION NOZZLES

FILTRATION

1st stage:

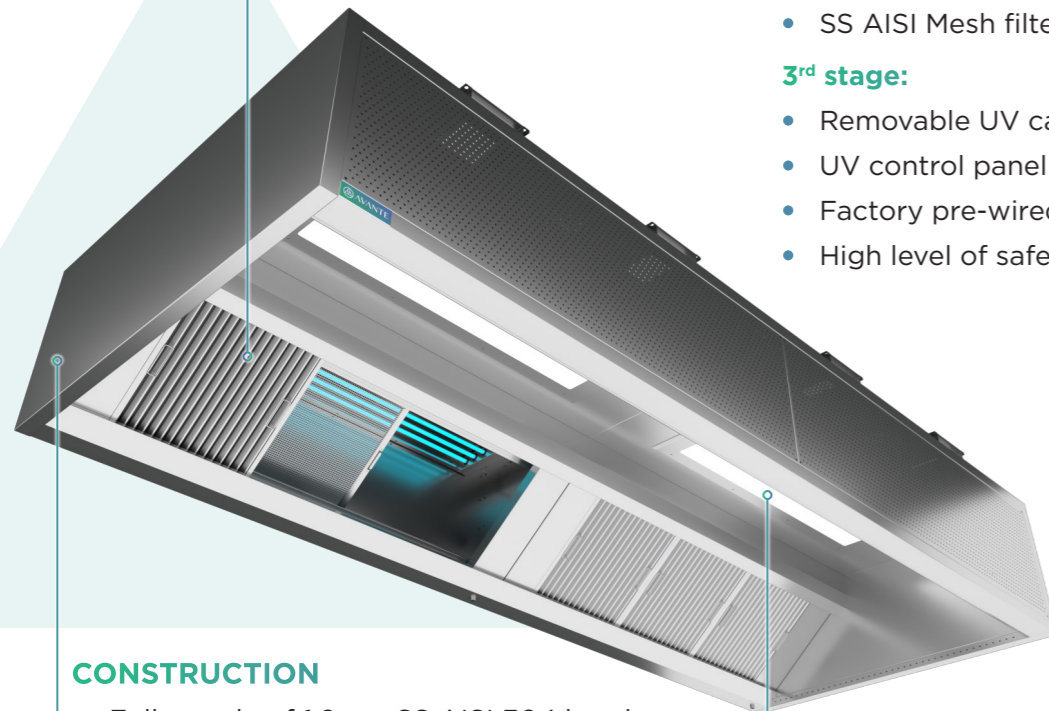
- Heavy duty Stainless Steel welded construction
- Filtration efficiency of 95% for 6-8 microns
- UL listed
- DMT certified for filtration efficiency
- Meets NFPA #96 requirements

2nd stage:

- SS AISI Mesh filter

3rd stage:

- Removable UV cassettes
- UV control panel
- Factory pre-wired
- High level of safety features



CONSTRUCTION

- Fully made of 1.2mm SS AISI 304 brush finish
- Double skin with front perforated supply section equipped with induction fan
- Welded construction
- UV filtration system
- Full-length induction nozzle slot on the front and sides to improve the extraction efficiency
- Sliding balancing dampers
- Extract air flow calculations as per DW 172
- Modular construction

LIGHTING

- Factory-wired
- Energy efficient fluorescent or LED lights (500 lux on the working surface - IP65)
- Tempered glass light diffuser with heat tolerance up to 180°C

TECHNICAL SPECIFICATIONS

MATERIAL:

- SS AISI 304 brush finish
- Thickness: 1.2mm

MAKEUP AIR:

- Front perforated SS AISI 304 brush finish insulated supply plenum

POWER SUPPLY:

- 120/220 - 240 V
- 50 - 60 Hz

UV LAMP LIFESPAN:

- Max 8000 hours

CONTROL PANEL:

- HMI display panel

SAFETY FEATURES:

- Differential air pressure switch and filter sensor switch

LIGHTING:

- Fluorescent or LED lights
- Rated IP65
- 500 - 600 lux on the working surface
- Low consumption
- Heat & vapor resistance
- Long-lasting

DIMENSIONS:

- 600 mm (Height)
- 1350 mm (Depth min)
- Length: customized

GREASE FILTERS CERTIFICATIONS:



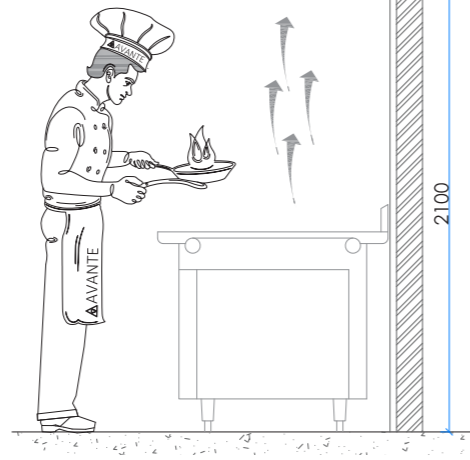
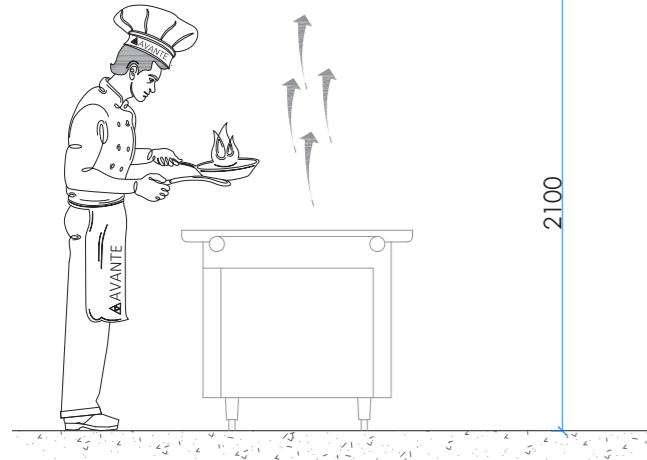
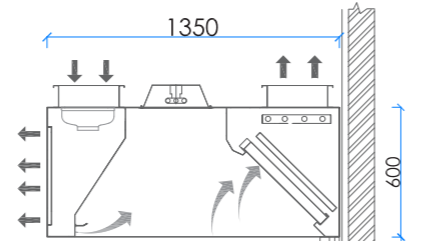
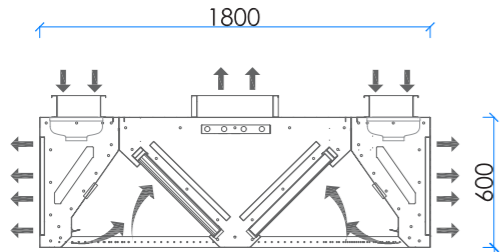
www.avanteuae.com



HOODS

AVANTE-SEF-UV HIGH EFFICIENCY UV EXTRACT CANOPY WITH MAKEUP AIR AND INDUCTION NOZZLES

TECHNICAL DRAWINGS



Island Hood

Wall mounted Hood

